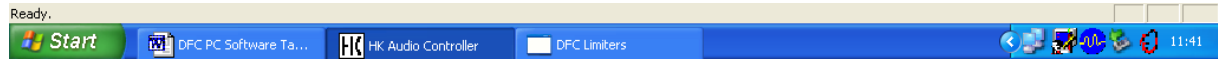


DFC PC Software Version 3.01

Error: symbols in the task bar seem bigger than before

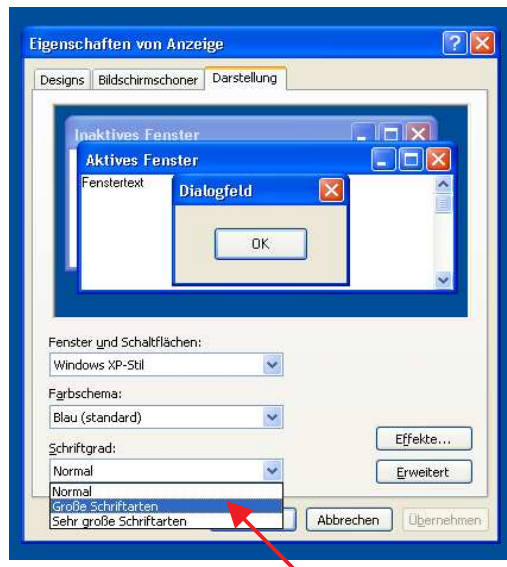
Some Windows XP computers display the symbols in the task bar bigger than usual after you started and closed the DFC software.



Example task bar with big symbols (modified)

How to solve this display problem

This change in setting can be reversed manually. Therefore, please click on the desktop with the right mouse button. The menu “display properties” opens. In the register “appearance” under “font size”, you can choose between “normal”, “big fonts” and “very big fonts”.



This setting alteration must be repeated twice! In your first attempt, choose “big fonts”, confirm with OK and Accept. In your second attempt, you choose “normal”.

The task bar symbols are now displayed again in their original setting.



Example task bar with small symbols (standard)